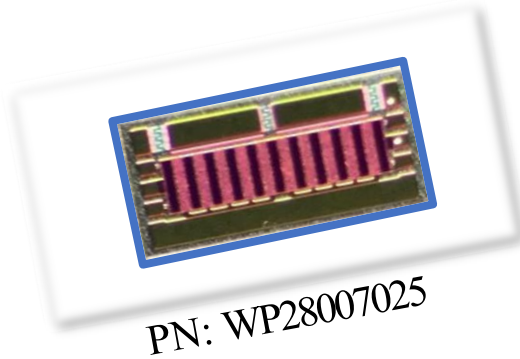




WP28007025

25W, 28V GaN HEMT Die



The WP28007025 is a 25W gallium nitride (GaN) High Electron Mobility Transistor (HEMT). This GaN HEMT is a wideband transistor optimized for DC-7GHz operation in a user-friendly device for high bandwidth applications. Gallium nitride (GaN) HEMT is a device optimized for ISM/C-band applications. GaN HEMT resistance is only 1/10 that of silicon transistors, making it capable of switching frequencies faster for greater energy efficiency.

Features

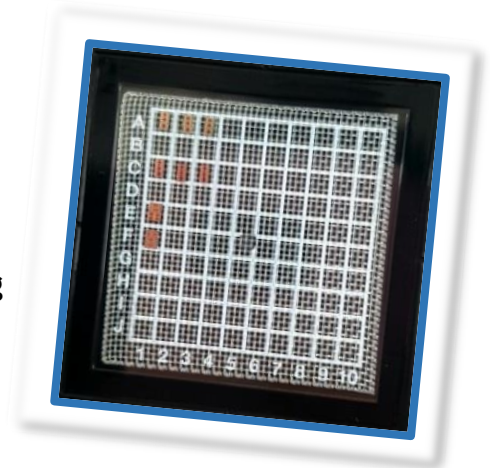
- Up to 7 GHz Operation
- 17.4 dB Typical Small Signal Gain @ 2.45 GHz
- 25 W Typical Psat @2.45GHz
- 28V Operation
- High Breakdown Voltage
- High Breakdown Voltage
- High Efficiency
- Reliability Monitoring Supporting

Applications

- ISM-band Amplifiers
- C-band Amplifiers
- Broadband Amplifiers
- Base Station Communications
- Drone, UAV
- Satellite Communications
- Radar application

Packaging Information

- Bare die are shipped in Wafer-level with Expander Ring or Gel-Pak® containers.
- Possible UV Curing for Wafer-level with dicing saw



Absolute Maximum Ratings (not simultaneous) at 25 °C

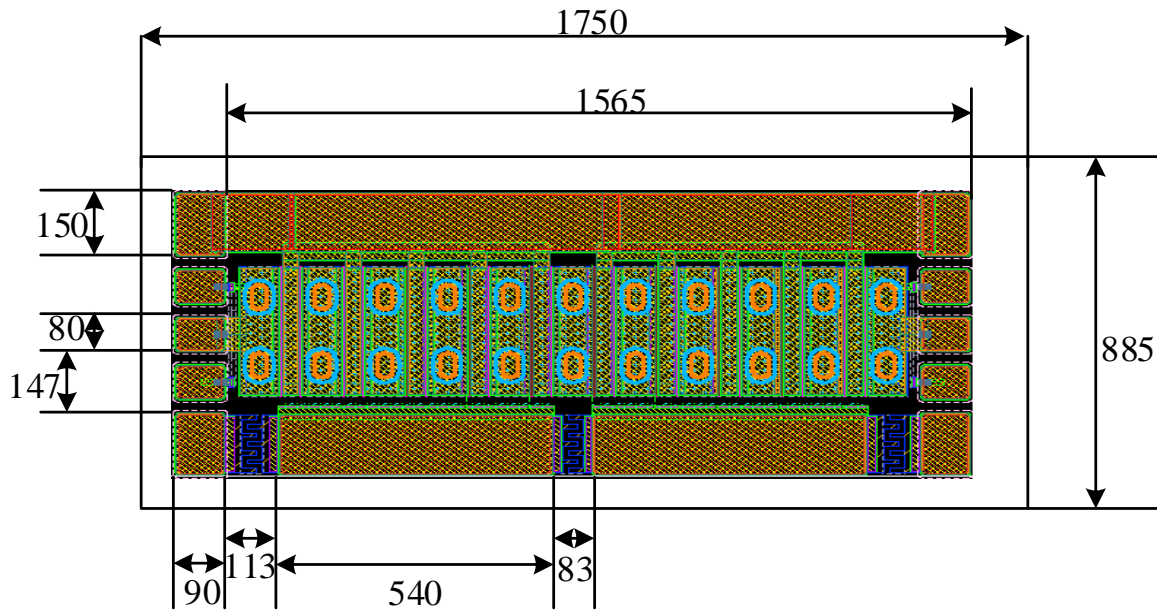
Parameter	Parameter	Typical Value	Units	Conditions
Threshold voltage @ Id=1mA/mm, Vd=10V	V _{to}	-3.4	V	25°C
Breakdown voltage @ Id=1mA/mm	V _{DG}	160	V	25°C
Drain-source current, Id @ Vd=10V, Vg=0	I _{dss}	800	mA/mm	25°C
Operating Junction Temperature	T _J	225	°C	
Storage Temperature	T _{STG}	-65, +150	°C	
Thermal Resistance, Junction to Case (packaged)	R _{θJC}		°C/W	
Thermal Resistance, Junction to Case (die only)	R _{θJC}		°C/W	
Mounting Temperature (30 seconds)	T _S	320	°C	30 seconds

Electrical Characteristics (Frequency = 2.45 GHz unless otherwise stated; TC = 25 °C)

Parameter	Parameter	Typical Value	Units	Conditions
DC Characteristics				
Ohmic contact resistance	RC	0.3	Ohm-mm	25°C
Maximum Drain-source current, Id @ Vd=10V, Vg=1V (1X125µm device)	I _{dmax}	1000	mA/mm	25°C
Max. trans-conductance, @ Vd=10V, Vg=-4V ~ -1V (1X125µm device)	GM_PEAK	290	mS/mm	25°C
Maximum Drain-source current, Id @ Vd=10V, Vg=1V (1X125µm device)	I _{dmax}	1000	mA/mm	25°C
RF Characteristics				
Small Signal Gain	G _{SS}	>17	dB	V _{DD} =28V, I _{DQ} =100mA
Saturated Power Output	P _{SAT}	25	W	V _{DD} =28V, I _{DQ} =100mA
Drain Efficiency	η	>70	%	V _{DD} =28V, I _{DQ} =100mA
Intermodulation Distortion	IM3	<-30	dBc	V _{DD} =28V, I _{DQ} =100mA
Output Mismatch Stress	VSWR	10:1	ψ	



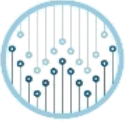
DIE Dimensions (units in microns)



Overall die size 1750 x 885 (+0/-50) microns, die thickness 100 (+/- 10) microns.
All Gate and Drain pads must be wire bonded for electrical connection.

Assembly Notes:

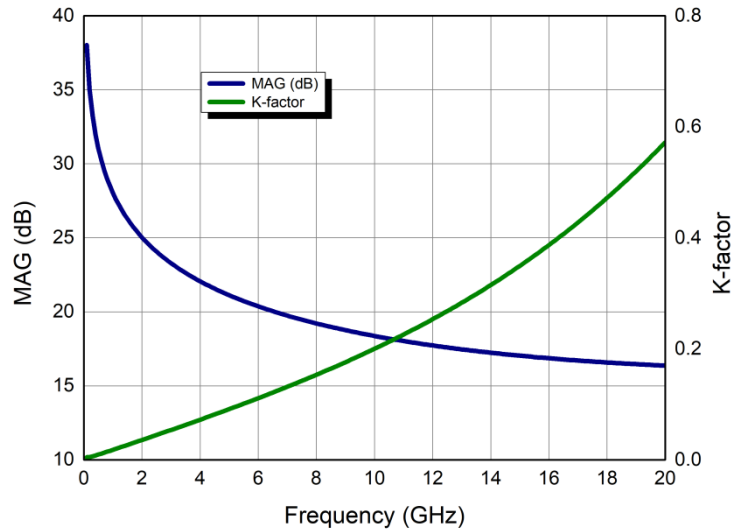
- Recommended solder is AuSn (80/20) solder. Refer to Wavepia's guide for the Eutectic Die Bond Procedure
- Vacuum collet is the preferred method of pick-up.
- The backside of the die is the Source (ground) contact.
- Die back side gold plating is 5 microns thick minimum.
- Thermosonic ball or wedge bonding are the preferred connection methods.
- Gold wire must be used for connections.



Typical Performance

Simulated Maximum Available Gain (MAG) and K Factor of the WP28007025

$$V_{DD} = 28 \text{ V}, I_{DQ} = 100 \text{ mA}$$



Intrinsic die parameters - reference planes at centers of gate and drain bonding pads. No wire bonds assumed.

Typical Performance

Simulated Minimum Noise Figure of the WP28007025

$$V_{DD} = 28 \text{ V}, I_{DQ} = 100 \text{ mA}$$

Under construction



Typical Die S-Parameters

(Small Signal, $V_{DS} = 28\text{ V}$, $I_{DQ} = 100\text{ mA}$, magnitude / angle)

Frequency	Mag S11	Ang S11	Mag S21	Ang S21	Mag S12	Ang S12	Mag S22	Ang S22
1000MHz	0.905779	-159.701	12.46321	90.21882	0.019607	1.508682	0.604761	-160.576
1100MHz	0.90579	-161.364	11.32734	88.50447	0.019599	-0.07333	0.608274	-161.304
1200MHz	0.905944	-162.744	10.37295	86.92996	0.019575	-1.51571	0.611748	-161.843
1300MHz	0.906208	-163.905	9.559709	85.46514	0.01954	-2.84851	0.615242	-162.239
1400MHz	0.906562	-164.895	8.858325	84.08838	0.019495	-4.09334	0.618792	-162.527
1500MHz	0.906991	-165.746	8.247066	82.78374	0.019442	-5.2661	0.622418	-162.732
1600MHz	0.907483	-166.486	7.709469	81.53925	0.019382	-6.37872	0.626131	-162.873
1700MHz	0.908029	-167.133	7.232845	80.34578	0.019315	-7.44032	0.629936	-162.964
1800MHz	0.908623	-167.703	6.807259	79.19625	0.019243	-8.45796	0.633834	-163.016
1900MHz	0.909259	-168.209	6.424829	78.08507	0.019165	-9.4372	0.637823	-163.039
2000MHz	0.909933	-168.66	6.079217	77.00783	0.019083	-10.3825	0.641898	-163.04
2100MHz	0.910641	-169.065	5.765276	75.96095	0.018996	-11.2973	0.646054	-163.023
2200MHz	0.911379	-169.43	5.47878	74.94155	0.018905	-12.1845	0.650285	-162.995
2300MHz	0.912144	-169.76	5.216228	73.94725	0.018811	-13.0466	0.654582	-162.958
2400MHz	0.912934	-170.06	4.974695	72.97609	0.018713	-13.8855	0.658938	-162.915
2500MHz	0.913745	-170.335	4.751719	72.02644	0.018612	-14.7027	0.663346	-162.869
2600MHz	0.914575	-170.587	4.545212	71.09691	0.018508	-15.4997	0.667799	-162.823
2700MHz	0.915423	-170.818	4.353394	70.18635	0.018401	-16.2776	0.672287	-162.776
2800MHz	0.916286	-171.032	4.174734	69.29377	0.018292	-17.0374	0.676804	-162.732
2900MHz	0.917161	-171.23	4.007912	68.41831	0.01818	-17.7799	0.681343	-162.69
3000MHz	0.918048	-171.414	3.851781	67.55924	0.018066	-18.5059	0.685896	-162.652
3100MHz	0.918945	-171.586	3.705342	66.71591	0.01795	-19.216	0.690457	-162.618
3200MHz	0.919849	-171.747	3.567716	65.88775	0.017832	-19.9108	0.695019	-162.589
3300MHz	0.92076	-171.898	3.438134	65.07426	0.017712	-20.5907	0.699576	-162.565
3400MHz	0.921676	-172.04	3.315912	64.27499	0.017591	-21.2563	0.704123	-162.546
3500MHz	0.922595	-172.173	3.200446	63.48954	0.017468	-21.9078	0.708653	-162.533
3600MHz	0.923516	-172.3	3.091196	62.71755	0.017344	-22.5457	0.713163	-162.525
3700MHz	0.924438	-172.42	2.987681	61.95867	0.017219	-23.1703	0.717647	-162.523
3800MHz	0.92536	-172.535	2.88947	61.2126	0.017093	-23.7819	0.722101	-162.526
3900MHz	0.926281	-172.643	2.796173	60.47904	0.016967	-24.3808	0.726521	-162.534
4000MHz	0.9272	-172.747	2.70744	59.75774	0.016839	-24.9672	0.730903	-162.548
4100MHz	0.928115	-172.847	2.622955	59.04844	0.016711	-25.5414	0.735245	-162.567
4200MHz	0.929026	-172.942	2.542429	58.3509	0.016582	-26.1037	0.739543	-162.592
4300MHz	0.929933	-173.034	2.465601	57.66489	0.016453	-26.6541	0.743794	-162.621
4400MHz	0.930833	-173.123	2.392233	56.99019	0.016324	-27.193	0.747996	-162.654
4500MHz	0.931728	-173.208	2.322107	56.32659	0.016194	-27.7206	0.752146	-162.692
4600MHz	0.932615	-173.29	2.255023	55.67389	0.016064	-28.237	0.756244	-162.735
4700MHz	0.933495	-173.37	2.190798	55.0319	0.015934	-28.7425	0.760287	-162.781
4800MHz	0.934367	-173.447	2.129263	54.40042	0.015805	-29.2372	0.764274	-162.831



Typical Die S-Parameters

(Small Signal, $V_{DS} = 28\text{ V}$, $I_{DQ} = 100\text{ mA}$, magnitude / angle)

Frequency	Mag S11	Ang S11	Mag S21	Ang S21	Mag S12	Ang S12	Mag S22	Ang S22
4900MHz	0.93523	-173.523	2.070263	53.77927	0.015675	-29.7213	0.768203	-162.885
5000MHz	0.936084	-173.595	2.013655	53.16826	0.015545	-30.1949	0.772073	-162.943
5100MHz	0.936929	-173.667	1.959306	52.56722	0.015416	-30.6584	0.775885	-163.003
5200MHz	0.937764	-173.736	1.907092	51.97596	0.015287	-31.1117	0.779636	-163.067
5300MHz	0.938589	-173.803	1.8569	51.39433	0.015159	-31.5551	0.783326	-163.134
5400MHz	0.939404	-173.869	1.808625	50.82215	0.015031	-31.9888	0.786956	-163.203
5500MHz	0.940208	-173.934	1.762166	50.25925	0.014903	-32.4129	0.790525	-163.275
5600MHz	0.941001	-173.997	1.717432	49.70548	0.014776	-32.8276	0.794032	-163.349
5700MHz	0.941784	-174.058	1.674337	49.16066	0.014649	-33.233	0.797478	-163.425
5800MHz	0.942555	-174.119	1.6328	48.62465	0.014524	-33.6292	0.800864	-163.503
5900MHz	0.943315	-174.178	1.592747	48.09728	0.014398	-34.0165	0.804188	-163.583
6000MHz	0.944064	-174.237	1.554106	47.5784	0.014274	-34.3949	0.807451	-163.664
6100MHz	0.944802	-174.294	1.516812	47.06787	0.01415	-34.7647	0.810655	-163.748
6200MHz	0.945528	-174.35	1.480802	46.56551	0.014027	-35.1259	0.813798	-163.832
6300MHz	0.946243	-174.405	1.446017	46.0712	0.013905	-35.4787	0.816882	-163.918
6400MHz	0.946947	-174.459	1.412404	45.58479	0.013784	-35.8232	0.819908	-164.005
6500MHz	0.947639	-174.513	1.379909	45.10613	0.013663	-36.1597	0.822876	-164.093
6600MHz	0.94832	-174.566	1.348484	44.63507	0.013543	-36.4881	0.825786	-164.182
6700MHz	0.948989	-174.617	1.318083	44.17149	0.013425	-36.8087	0.82864	-164.271
6800MHz	0.949647	-174.668	1.288662	43.71524	0.013307	-37.1215	0.831437	-164.361
6900MHz	0.950294	-174.719	1.260179	43.26619	0.01319	-37.4267	0.83418	-164.452
7000MHz	0.95093	-174.768	1.232596	42.8242	0.013074	-37.7245	0.836868	-164.544
7100MHz	0.951555	-174.817	1.205875	42.38914	0.012959	-38.0149	0.839503	-164.636
7200MHz	0.952169	-174.865	1.179982	41.96089	0.012845	-38.2981	0.842086	-164.728
7300MHz	0.952772	-174.913	1.154883	41.53932	0.012732	-38.5741	0.844616	-164.82
7400MHz	0.953364	-174.96	1.130546	41.1243	0.012619	-38.8432	0.847096	-164.913
7500MHz	0.953946	-175.006	1.106941	40.71571	0.012508	-39.1054	0.849525	-165.006
7600MHz	0.954517	-175.052	1.08404	40.31344	0.012398	-39.3608	0.851906	-165.098
7700MHz	0.955078	-175.097	1.061816	39.91735	0.012289	-39.6096	0.854238	-165.191
7800MHz	0.955629	-175.142	1.040243	39.52733	0.012181	-39.8518	0.856523	-165.284
7900MHz	0.95617	-175.186	1.019295	39.14328	0.012074	-40.0876	0.858761	-165.377
8000MHz	0.956701	-175.229041	0.99895	38.76508	0.011967	-40.317	0.860954	-165.469
8100MHz	0.957222	-175.272007	0.979185	38.39261	0.011862	-40.5402	0.863103	-165.562
8200MHz	0.957734	-175.314459	0.959979	38.02578	0.011758	-40.7573	0.865207	-165.654
8300MHz	0.958236	-175.35641	0.941312	37.66446	0.011655	-40.9683	0.867269	-165.745
8400MHz	0.958728	-175.39787	0.923163	37.30857	0.011553	-41.1734	0.869289	-165.837
8500MHz	0.959212	-175.438848	0.905515	36.95799	0.011451	-41.3727	0.871268	-165.928
8600MHz	0.959687	-175.479356	0.88835	36.61264	0.011351	-41.5661	0.873206	-166.019
8700MHz	0.960152	-175.519	0.87165	36.2724	0.011252	-41.754	0.875105	-166.109

Contact WAVEPIA to receive this s-parameter file in “.s2p” format at sales@wavepia.com



Typical Die S-Parameters

(Small Signal, $V_{DS} = 28\text{ V}$, $I_{DQ} = 100\text{ mA}$, magnitude / angle)

Frequency	Mag S11	Ang S11	Mag S21	Ang S21	Mag S12	Ang S12	Mag S22	Ang S22
8800MHz	0.96061	-175.558992	0.855399	35.93718	0.011154	-41.9362	0.876965	-166.199
8900MHz	0.961058	-175.598139	0.839583	35.60689	0.011057	-42.113	0.878788	-166.289
9000MHz	0.961498	-175.636849	0.824185	35.28143	0.01096	-42.2843	0.880573	-166.378
9100MHz	0.96193	-175.675129	0.809192	34.96072	0.010865	-42.4503	0.882323	-166.467
9200MHz	0.962354	-175.712989	0.79459	34.64467	0.010771	-42.6111	0.884037	-166.555
9300MHz	0.96277	-175.75	0.780365	34.33318	0.010677	-42.7667	0.885716	-166.642
9400MHz	0.963178	-175.787471	0.766506	34.02617	0.010585	-42.9172	0.887362	-166.729
9500MHz	0.963579	-175.824108	0.753	33.72357	0.010493	-43.0627	0.888975	-166.816
9600MHz	0.963972	-175.860352	0.739836	33.42528	0.010402	-43.2033	0.890555	-166.901
9700MHz	0.964358	-175.896208	0.727002	33.13123	0.010313	-43.339	0.892103	-166.987
9800MHz	0.964736	-175.932	0.714489	32.84134	0.010224	-43.4698	0.893621	-167.071
9900MHz	0.965108	-175.966782	0.702284	32.55552	0.010136	-43.596	0.895108	-167.155
10000MHz	0.965472	-176.001512	0.69038	32.27372	0.010049	-43.7174	0.896566	-167.239
11000MHz	0.96583	-176.035879	0.678766	31.99584	0.009963	-43.8343	0.897995	-167.322
11100MHz	0.966181	-176.069887	0.667433	31.72183	0.009878	-43.9466	0.899396	-167.404
11200MHz	0.966526	-176.103543	0.656373	31.45161	0.009794	-44.0544	0.900769	-167.485
11300MHz	0.966864	-176.137	0.645576	31.1851	0.00971	-44.1578	0.902115	-167.566
11400MHz	0.967196	-176.169819	0.635036	30.92225	0.009627	-44.2569	0.903435	-167.647
11500MHz	0.967522	-176.20245	0.624743	30.66298	0.009546	-44.3516	0.904729	-167.726
11600MHz	0.967842	-176.235	0.614692	30.40724	0.009465	-44.4421	0.905997	-167.805
11700MHz	0.968156	-176.266719	0.604873	30.15495	0.009385	-44.5283	0.907241	-167.883
11800MHz	0.968464	-176.298368	0.595281	29.90605	0.009305	-44.6104	0.908461	-167.961
11900MHz	0.968767	-176.3297	0.585909	29.66049	0.009227	-44.6884	0.909658	-168.038
12000MHz	0.969064	-176.360719	0.57675	29.41821	0.009149	-44.7624	0.910831	-168.114
12100MHz	0.969356	-176.39143	0.567798	29.17914	0.009072	-44.8323	0.911982	-168.19
12200MHz	0.969642	-176.421837	0.559047	28.94323	0.008996	-44.8983	0.913112	-168.265
12300MHz	0.969924	-176.452	0.550491	28.71042	0.008921	-44.9603	0.914219	-168.34
12400MHz	0.9702	-176.481757	0.542125	28.48067	0.008846	-45.0185	0.915306	-168.413
12500MHz	0.970471	-176.511278	0.533942	28.2539	0.008773	-45.0729	0.916372	-168.486
12600MHz	0.970737	-176.541	0.525939	28.03008	0.0087	-45.1235	0.917418	-168.559
12700MHz	0.970999	-176.569464	0.51811	27.80915	0.008627	-45.1703	0.918444	-168.631
12800MHz	0.971256	-176.598137	0.510449	27.59107	0.008556	-45.2134	0.919451	-168.702
12900MHz	0.971508	-176.626536	0.502953	27.37577	0.008485	-45.2528	0.92044	-168.772
13000MHz	0.971756	-176.654663	0.495617	27.16322	0.008415	-45.2886	0.92141	-168.842
13100MHz	0.972	-176.682523	0.488436	26.95336	0.008345	-45.3208	0.922362	-168.912
13200MHz	0.972239	-176.71012	0.481406	26.74616	0.008277	-45.3494	0.923297	-168.98
13300MHz	0.972474	-176.737458	0.474523	26.54156	0.008208	-45.3744	0.924215	-169.048
13400MHz	0.972705	-176.764539	0.467783	26.33953	0.008141	-45.396	0.925116	-169.116
13500MHz	0.972931	-176.791368	0.461183	26.14001	0.008074	-45.4141	0.926	-169.183



Typical Die S-Parameters

(Small Signal, $V_{DS} = 28\text{ V}$, $I_{DQ} = 100\text{ mA}$, magnitude / angle)

Frequency	Mag S11	Ang S11	Mag S21	Ang S21	Mag S12	Ang S12	Mag S22	Ang S22
13600MHz	0.974996	-177.047	0.402075	24.27448	0.007443	-45.4096	0.93402	-169.818
13700MHz	0.975184	-177.071	0.396785	24.10007	0.007383	-45.3912	0.934747	-169.878
13800MHz	0.975368	-177.094851	0.391597	23.92772	0.007324	-45.3695	0.935461	-169.938
13900MHz	0.97555	-177.118699	0.386508	23.7574	0.007265	-45.3447	0.936162	-169.997
14000MHz	0.975728	-177.142339	0.381516	23.58909	0.007207	-45.3168	0.936852	-170.056
14100MHz	0.975904	-177.165774	0.376618	23.42274	0.007149	-45.2857	0.93753	-170.114
14200MHz	0.976076	-177.189007	0.371813	23.25833	0.007092	-45.2514	0.938196	-170.172
14300MHz	0.976246	-177.212041	0.367097	23.09584	0.007036	-45.2141	0.938851	-170.229
14400MHz	0.976413	-177.234877	0.362468	22.93522	0.00698	-45.1737	0.939495	-170.285
14500MHz	0.976577	-177.25752	0.357925	22.77645	0.006924	-45.1302	0.940128	-170.341
14600MHz	0.976739	-177.27997	0.353466	22.61951	0.00687	-45.0836	0.94075	-170.397
14700MHz	0.976898	-177.302232	0.349088	22.46436	0.006815	-45.0339	0.941362	-170.452
14800MHz	0.977054	-177.324308	0.34479	22.31097	0.006762	-44.9813	0.941964	-170.507
14900MHz	0.977208	-177.346199	0.340569	22.15933	0.006708	-44.9255	0.942556	-170.561
15000MHz	0.97736	-177.367909	0.336424	22.0094	0.006655	-44.8668	0.943139	-170.614
15100MHz	0.977509	-177.38944	0.332354	21.86116	0.006603	-44.805	0.943711	-170.667
15200MHz	0.977655	-177.410795	0.328355	21.71458	0.006551	-44.7403	0.944275	-170.72
15300MHz	0.9778	-177.431975	0.324428	21.56964	0.0065	-44.6725	0.944829	-170.772
15400MHz	0.977942	-177.452983	0.320569	21.42632	0.006449	-44.6017	0.945374	-170.824
15500MHz	0.978082	-177.473821	0.316778	21.28459	0.006399	-44.528	0.945911	-170.875
15600MHz	0.978219	-177.494492	0.313053	21.14443	0.006349	-44.4512	0.946439	-170.926
15700MHz	0.978355	-177.514998	0.309392	21.00581	0.0063	-44.3715	0.946958	-170.976
15800MHz	0.978488	-177.53534	0.305794	20.86872	0.006251	-44.2888	0.947469	-171.026
15900MHz	0.97862	-177.555522	0.302258	20.73313	0.006202	-44.2032	0.947972	-171.075
16000MHz	0.978749	-177.575545	0.298782	20.59901	0.006154	-44.1146	0.948467	-171.124
16100MHz	0.978876	-177.595	0.295365	20.46636	0.006107	-44.023	0.948955	-171.172
16200MHz	0.979002	-177.615122	0.292006	20.33515	0.006059	-43.9284	0.949434	-171.221
16300MHz	0.979125	-177.634681	0.288703	20.20535	0.006013	-43.8309	0.949907	-171.268
16400MHz	0.979247	-177.654	0.285455	20.07696	0.005966	-43.7304	0.950372	-171.315
16500MHz	0.979367	-177.673348	0.282261	19.94994	0.00592	-43.627	0.950829	-171.362
16600MHz	0.979485	-177.69246	0.27912	19.82429	0.005875	-43.5206	0.95128	-171.409
16700MHz	0.979601	-177.711	0.27603	19.69998	0.00583	-43.4113	0.951724	-171.455
16800MHz	0.979715	-177.730253	0.272991	19.57699	0.005785	-43.299	0.952161	-171.5
16900MHz	0.979828	-177.748936	0.270001	19.45531	0.005741	-43.1837	0.952591	-171.545
17000MHz	0.979939	-177.76748	0.26706	19.33491	0.005697	-43.0655	0.953015	-171.59
17100MHz	0.980049	-177.785886	0.264166	19.21579	0.005654	-42.9443	0.953433	-171.635
17200MHz	0.980157	-177.804156	0.261318	19.09792	0.005611	-42.8201	0.953844	-171.679
17300MHz	0.980263	-177.822293	0.258516	18.98129	0.005568	-42.6929	0.954249	-171.722
17400MHz	0.980368	-177.840297	0.255758	18.86588	0.005526	-42.5628	0.954648	-171.766

Contact WAVEPIA to receive this s-parameter file in “.s2p” format at sales@wavepia.com

Disclaimer

Information furnished by WAVEPIA Co., Ltd. is believed to be accurate and reliable. However, no responsibility is assumed by WAVEPIA Co., Ltd. for its use, nor for any infringements of patents or other rights of third parties that may result from its use. The information contained is provided “as it is” and with all defects, and the whole risk associated with such information is entirely with the user. Specifications subject to change without notice. WAVEPIA Co., Ltd. and registered trademarks are the property of their respective owners. Customers must search and verify the updated information before placing orders for our products. We makes no guarantee or representation regarding the information contained herein the using of products for any specific purpose. WAVEPIA Co., Ltd. products are not warranted or authorized for use as key components in conditions, or other applications where a failure would be expected to cause severe personal injury or death.

For more information, please contact :

- *WAVEPIA Co., Ltd.*
- *#1301, 557, Dongtangiheung-ro, Hwaseong-si, Gyeonggi-do, Republic of Korea*
- *Application Support: sales@wavepia.com*