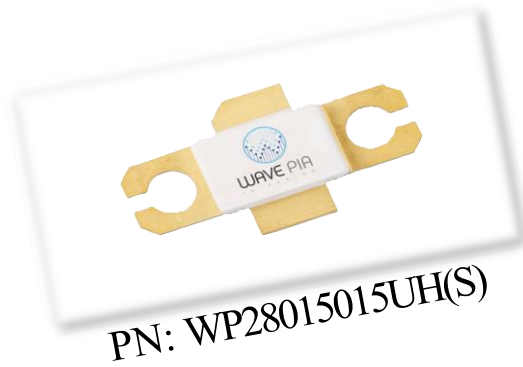




WP28015015UH(S)

15W, 28V GaN HEMT Unmatched TR



The WP28015015 is a 15W gallium nitride (GaN) High Electron Mobility Transistor (HEMT). This GaN HEMT is a wideband transistor optimized for X-band operation in a user-friendly device for high bandwidth applications. Gallium nitride (GaN) HEMT is a device optimized for 5G. GaN HEMT resistance is only 1/10 that of silicon transistors, making it capable of switching frequencies faster for greater energy efficiency.

Features

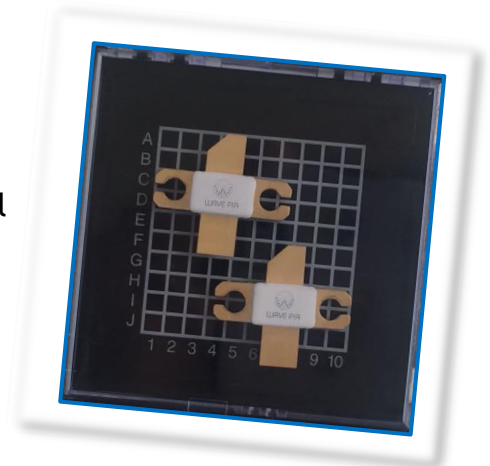
- Up to 8 GHz Operation
- 14.0 dB Typical Small Signal Gain @ 4.7GHz
- 15 W Typical Psat @8.15GHz
- 28V Operation
- High Breakdown Voltage
- High Breakdown Voltage
- High Efficiency
- Reliability Monitoring Supporting (optional)

Applications

- U/VHF Amplifiers
- Broadband Amplifiers
- Base Station Communications
- Drone, UAV
- WiMAX, LTE, WCDMA, GSM
- WPT, V2X
- Radar application

Packaging Information

- Unmatched TRs are shipped in packaged-level with each-bag or Gel-Pak® containers.
- Possible Reel-type container for SMT



Absolute Maximum Ratings (not simultaneous) at 25 °C

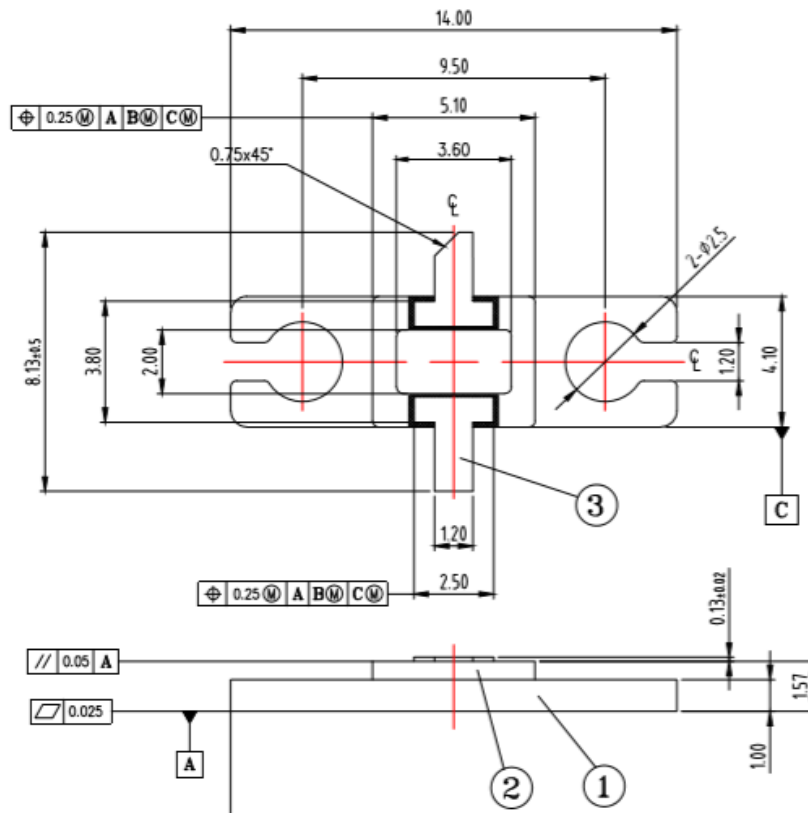
Parameter	Parameter	Typical Value	Units	Conditions
Threshold voltage @ Id=1mA/mm, Vd=10V	V _{to}	-3.2	V	25°C
Breakdown voltage @ Id=1mA/mm	V _{DG}	>100	V	25°C
Drain-source current, Id @ Vd=10V, Vg=0	I _{dss}	880	mA/mm	25°C
Operating Junction Temperature	T _J	225	°C	
Storage Temperature	T _{STG}	-65, +150	°C	
Thermal Resistance, Junction to Case (packaged)	R _{θJC}		°C/W	
Thermal Resistance, Junction to Case (die only)	R _{θJC}		°C/W	
Mounting Temperature (30 seconds)	T _S	320	°C	30 seconds

Electrical Characteristics (Frequency = 4.7 GHz unless otherwise stated; TC = 25 °C)

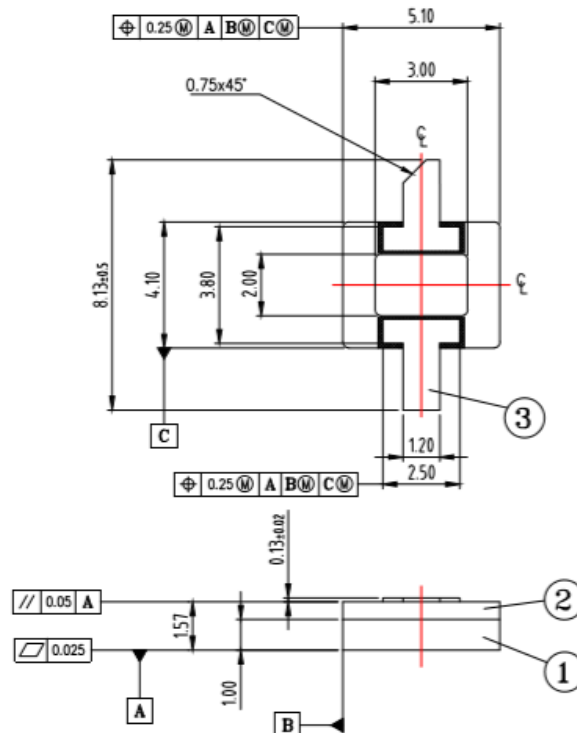
Parameter	Parameter	Typical Value	Units	Conditions
DC Characteristics				
Ohmic contact resistance	RC	0.4	Ohm-mm	25°C
Maximum Drain-source current, Id @ Vd=10V, Vg=1V (1X125µm device)	I _{dmax}	1050	mA/mm	25°C
Max. trans-conductance, @ Vd=10V, Vg=-4V ~ -1V (1X125µm device)	GM_PEAK	340	mS/mm	25°C
Maximum Drain-source current, Id @ Vd=10V, Vg=1V (1X125µm device)	I _{dmax}	1000	mA/mm	25°C
RF Characteristics				
Small Signal Gain	G _{SS}	>14	dB	V _{DD} =28V, I _{DQ} =300mA
Saturated Power Output	P _{SAT}	15	W	V _{DD} =28V, I _{DQ} =300mA
Drain Efficiency	η	>60	%	V _{DD} =28V, I _{DQ} =300mA
Intermodulation Distortion	IM3	<-30	dBc	V _{DD} =28V, I _{DQ} =300mA
Output Mismatch Stress	VSWR	10:1	ψ	



TR Dimensions (units in inch)



<WP28015015UH>



<WP28015015US>

Assembly Notes:

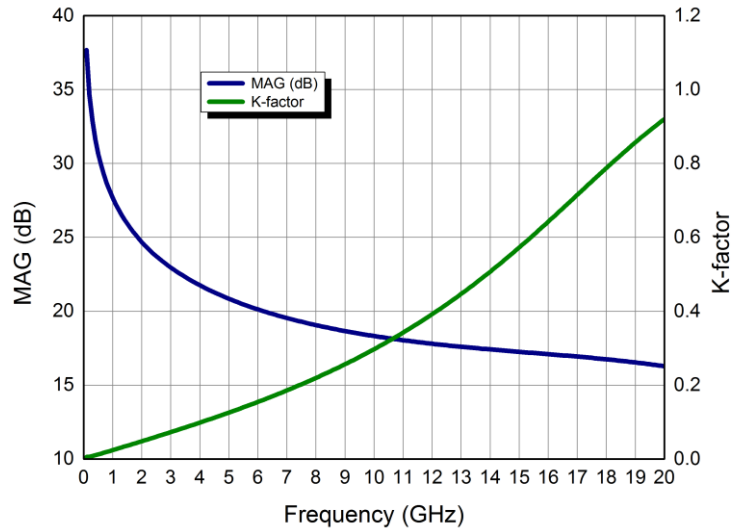
- Recommended solder is AuSn (80/20) solder. Refer to Wavepia's guide for the Eutectic Bond Procedure



Typical Performance

Simulated Maximum Available Gain (MAG) and K Factor of the WP28015015UH(S)

$V_{DD} = 28\text{ V}$, $I_{DQ} = 300\text{ mA}$



Intrinsic die parameters - reference planes at centers of gate and drain bonding pads. No wire bonds assumed.

Typical Performance

Simulated Minimum Noise Figure of the WP28015015UH(S)

$V_{DD} = 28\text{ V}$, $I_{DQ} = 300\text{ mA}$

Under construction!



Typical TR S-Parameters

(Small Signal, $V_{DS} = 28\text{ V}$, $I_{DQ} = 300\text{ mA}$, magnitude / angle)

Frequency	Mag S11	Ang S11	Mag S21	Ang S21	Mag S12	Ang S12	Mag S22	Ang S22
1000MHz	0.903529	-154.696	13.50386	92.95148	0.023056	4.999855	0.535088	-152.314
1100MHz	0.903218	-156.806	12.29192	91.06037	0.023078	3.317398	0.538711	-153.515
1200MHz	0.90311	-158.566	11.27027	89.3403	0.023075	1.805933	0.542385	-154.436
1300MHz	0.903156	-160.056	10.39752	87.75448	0.023053	0.428752	0.546148	-155.147
1400MHz	0.903324	-161.331	9.643362	86.27628	0.023016	-0.84073	0.550022	-155.695
1500MHz	0.903589	-162.433	8.985107	84.88596	0.022967	-2.02218	0.554017	-156.117
1600MHz	0.903936	-163.394	8.405479	83.56865	0.022907	-3.13046	0.558138	-156.441
1700MHz	0.904351	-164.239	7.891092	82.31291	0.022838	-4.17695	0.562384	-156.689
1800MHz	0.904825	-164.987	7.431429	81.10984	0.02276	-5.17053	0.566675	-156.875
1900MHz	0.90535	-165.653	7.01811	79.95241	0.022676	-6.11819	0.571232	-157.015
2000MHz	0.905919	-166.25	6.644386	78.835	0.022585	-7.02552	0.575822	-157.118
2100MHz	0.906528	-166.787	6.304758	77.75309	0.022488	-7.89704	0.580511	-157.192
2200MHz	0.907172	-167.274	5.994704	76.70298	0.022386	-8.7364	0.585291	-157.244
2300MHz	0.907848	-167.716	5.710469	75.68162	0.022278	-9.54663	0.590152	-157.279
2400MHz	0.908551	-168.12	5.448915	74.68651	0.022166	-10.3302	0.595084	-157.303
2500MHz	0.90928	-168.49	5.207393	73.71553	0.02205	-11.0892	0.600079	-157.319
2600MHz	0.910031	-168.83	4.983659	72.76691	0.02193	-11.8255	0.605127	-157.328
2700MHz	0.910802	-169.145	4.775792	71.83914	0.021806	-12.5404	0.61022	-157.335
2800MHz	0.91159	-169.436	4.582144	70.93096	0.021678	-13.2352	0.615347	-157.341
2900MHz	0.912395	-169.707	4.401289	70.04125	0.021548	-13.9111	0.620501	-157.347
3000MHz	0.913213	-169.959	4.231989	69.16905	0.021414	-14.5689	0.625674	-157.355
3100MHz	0.914043	-170.195	4.073165	68.31355	0.021277	-15.2094	0.630857	-157.365
3200MHz	0.914883	-170.416	3.923869	67.47402	0.021138	-15.8334	0.636045	-157.379
3300MHz	0.915732	-170.624	3.783267	66.64981	0.020997	-16.4415	0.641228	-157.397
3400MHz	0.916589	-170.82	3.650621	65.84035	0.020854	-17.0342	0.646402	-157.42
3500MHz	0.917451	-171.006	3.525277	65.04514	0.020708	-17.6121	0.65156	-157.447
3600MHz	0.918317	-171.181	3.406653	64.26373	0.020561	-18.1755	0.656697	-157.479
3700MHz	0.919187	-171.348	3.294227	63.49569	0.020412	-18.7248	0.661806	-157.516
3800MHz	0.920059	-171.506	3.187531	62.74066	0.020262	-19.2604	0.666883	-157.559
3900MHz	0.920932	-171.658	3.086147	61.99828	0.02011	-19.7826	0.671925	-157.606
4000MHz	0.921804	-171.802	2.989694	61.26824	0.019957	-20.2918	0.676925	-157.659
4100MHz	0.922676	-171.94	2.897831	60.55024	0.019803	-20.7881	0.681882	-157.716
4200MHz	0.923546	-172.073	2.810245	59.84401	0.019648	-21.2718	0.686791	-157.779
4300MHz	0.924413	-172.201	2.726655	59.14929	0.019492	-21.7433	0.691649	-157.846
4400MHz	0.925277	-172.323	2.646802	58.46584	0.019336	-22.2026	0.696454	-157.918
4500MHz	0.926136	-172.442	2.570451	57.79342	0.019179	-22.65	0.701203	-157.994
4600MHz	0.926991	-172.556	2.497386	57.13181	0.019021	-23.0858	0.705893	-158.075
4700MHz	0.92784	-172.667	2.427409	56.4808	0.018863	-23.51	0.710524	-158.159
4800MHz	0.928683	-172.774	2.360339	55.84019	0.018705	-23.9229	0.715093	-158.247



Typical TR S-Parameters

(Small Signal, $V_{DS} = 28\text{ V}$, $I_{DQ} = 300\text{ mA}$, magnitude / angle)

Frequency	Mag S11	Ang S11	Mag S21	Ang S21	Mag S12	Ang S12	Mag S22	Ang S22
4900MHz	0.929519	-172.878	2.296007	55.20979	0.018547	-24.3246	0.719599	-158.339
5000MHz	0.930348	-172.978	2.234259	54.5894	0.018389	-24.7153	0.72404	-158.434
5100MHz	0.93117	-173.076	2.174951	53.97885	0.018231	-25.0952	0.728416	-158.532
5200MHz	0.931983	-173.172	2.117951	53.37795	0.018073	-25.4644	0.732726	-158.633
5300MHz	0.932789	-173.265	2.063136	52.78653	0.017915	-25.823	0.736968	-158.737
5400MHz	0.933585	-173.356	2.010392	52.20442	0.017758	-26.1713	0.741143	-158.844
5500MHz	0.934373	-173.444	1.959611	51.63146	0.017601	-26.5093	0.745251	-158.952
5600MHz	0.935152	-173.531	1.910696	51.06749	0.017444	-26.8372	0.749291	-159.063
5700MHz	0.935921	-173.615	1.863552	50.51234	0.017288	-27.1551	0.753262	-159.176
5800MHz	0.93668	-173.698	1.818093	49.96587	0.017132	-27.4631	0.757166	-159.291
5900MHz	0.93743	-173.78	1.774239	49.42792	0.016977	-27.7614	0.761002	-159.408
6000MHz	0.93817	-173.859	1.731914	48.89834	0.016822	-28.0501	0.76477	-159.526
6100MHz	0.9389	-173.937	1.691045	48.37698	0.016668	-28.3293	0.768471	-159.645
6200MHz	0.93962	-174.014	1.651567	47.86371	0.016515	-28.5992	0.772106	-159.765
6300MHz	0.940329	-174.089	1.613416	47.35837	0.016363	-28.8597	0.775674	-159.887
6400MHz	0.941029	-174.163	1.576533	46.86083	0.016211	-29.1111	0.779177	-160.009
6500MHz	0.941718	-174.236	1.540861	46.37096	0.016061	-29.3535	0.782614	-160.133
6600MHz	0.942396	-174.307	1.50635	45.88861	0.015911	-29.5869	0.785987	-160.257
6700MHz	0.943065	-174.378	1.472948	45.41365	0.015762	-29.8115	0.789297	-160.381
6800MHz	0.943723	-174.447	1.440608	44.94595	0.015614	-30.0274	0.792544	-160.506
6900MHz	0.94437	-174.515	1.409287	44.48539	0.015467	-30.2347	0.795729	-160.632
7000MHz	0.945008	-174.583	1.378942	44.03184	0.015322	-30.4334	0.798853	-160.757
7100MHz	0.945635	-174.649	1.349533	43.58517	0.015177	-30.6236	0.801916	-160.883
7200MHz	0.946252	-174.714	1.321022	43.14526	0.015033	-30.8055	0.80492	-161.009
7300MHz	0.946859	-174.779	1.293375	42.71198	0.01489	-30.9792	0.807866	-161.135
7400MHz	0.947456	-174.843	1.266555	42.28523	0.014748	-31.1446	0.810754	-161.261
7500MHz	0.948043	-174.905	1.240532	41.86489	0.014608	-31.302	0.813585	-161.387
7600MHz	0.94862	-174.967	1.215274	41.45083	0.014468	-31.4514	0.816361	-161.513
7700MHz	0.949188	-175.029	1.190752	41.04295	0.01433	-31.5928	0.819082	-161.638
7800MHz	0.949745	-175.089	1.166939	40.64114	0.014192	-31.7264	0.82175	-161.763
7900MHz	0.950294	-175.149	1.143807	40.24529	0.014056	-31.8522	0.824365	-161.888
8000MHz	0.950832	-175.208	1.121332	39.85528	0.013921	-31.9703	0.826928	-162.013
8100MHz	0.951362	-175.266	1.099489	39.47103	0.013787	-32.0807	0.82944	-162.136
8200MHz	0.951882	-175.324	1.078255	39.09242	0.013655	-32.1836	0.831902	-162.26
8300MHz	0.952393	-175.381	1.057608	38.71935	0.013523	-32.2789	0.834316	-162.383
8400MHz	0.952896	-175.437	1.037528	38.35172	0.013393	-32.3669	0.836681	-162.505
8500MHz	0.953389	-175.493	1.017994	37.98944	0.013264	-32.4474	0.839	-162.627
8600MHz	0.953874	-175.547805	0.998987	37.63241	0.013136	-32.5207	0.841273	-162.748
8700MHz	0.95435	-175.602	0.980488	37.28053	0.013009	-32.5866	0.8435	-162.869

Contact WAVEPIA to receive this s-parameter file in “.s2p” format at platune@wavepia.com

Disclaimer

Information furnished by WAVEPIA Co., Ltd. is believed to be accurate and reliable. However, no responsibility is assumed by WAVEPIA Co., Ltd. for its use, nor for any infringements of patents or other rights of third parties that may result from its use. The information contained is provided “as it is” and with all defects, and the whole risk associated with such information is entirely with the user. Specifications subject to change without notice. WAVEPIA Co., Ltd. and registered trademarks are the property of their respective owners. Customers must search and verify the updated information before placing orders for our products. We makes no guarantee or representation regarding the information contained herein the using of products for any specific purpose. WAVEPIA Co., Ltd. products are not warranted or authorized for use as key components in conditions, or other applications where a failure would be expected to cause severe personal injury or death.

For more information, please contact :

- *For more details : WAVEPIA Co., Ltd.*
- *#1301, 557, Dongtangiheung-ro, Hwaseong-si, Gyeonggi-do, Republic of Korea*
- *Application Support: platune@wavepia.com*

Sanghun Lee
CTO
WAVEPIA, IC DESIGN
+82.31.8058.3374